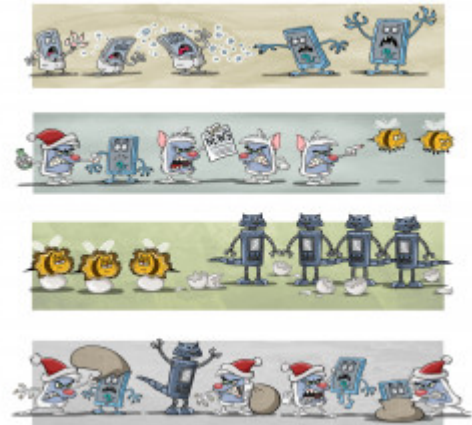


Acquired Immunity



PLAY PICMONIC

Lymphocytes

[Lycanthropes](#)

Cytotoxic T Cell

[Santa-toxic](#)

Helper T

[Amputee](#)

B Cells

[Bee-cells](#)

Antiviral Antibodies

[Anti-viper-robots](#)

Cytotoxic T Lymphocytes

[CTLs and Antibodies Defeat the Virus](#)