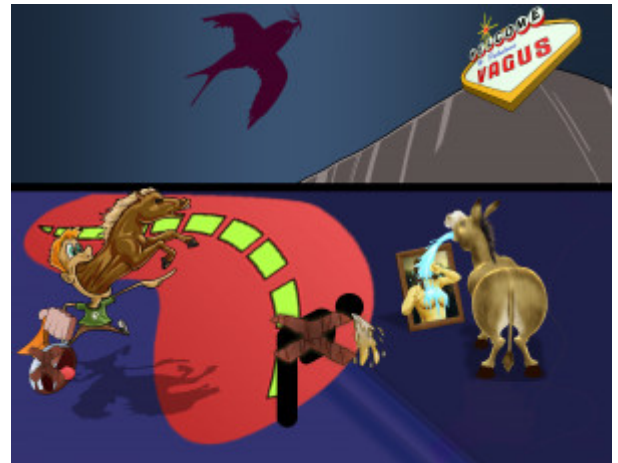


CN X Lesion



PLAY PICMONIC

Uvula Deviation To Contralateral Side

[Uvula with midline deviated](#)

When cranial nerve X is damaged, uvula deviates to the contralateral side due to compromised elevation of the palate on the affected side.

Impaired Gag Reflex

[gagging-guy-X](#)

Impaired gag reflex is a common complication of CN X lesion as the efferent pathway is mediated by CN X.

Difficulty Swallowing

[Purple swallow trying to swallow](#)

Difficulty swallowing is a common complication of CN X lesion.

Hoarse Voice

[Horse-in-throat](#)

A hoarse voice is a common complication of CN X lesion due to the involvement of recurrent laryngeal nerve which results in ipsilateral vocal cord paralysis.

Impaired Coughing

[Coughing-coffee with X](#)

Impaired cough reflex is a common complication of CN X lesion, this can lead to aspiration pneumonia.

Aspiration Pneumonia

[Aspirating-ass Spraying Water on Nude-Mona](#)

Aspiration pneumonia is a possible complication of CN X lesion and can be life-threatening without treatment, hence the importance of early identification and preventive measures.