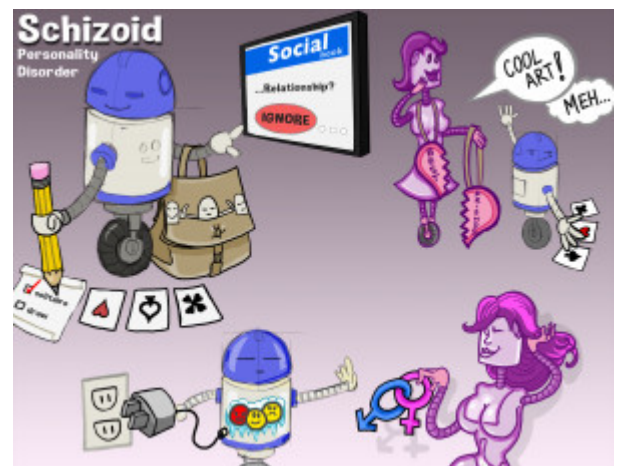


Schizoid Personality Disorder

Schizoid personality disorder is characterized by an inability to form and maintain meaningful personal relationships. They lack close relationships with others and enjoy solitary activities. They find little interest in having sex. Individuals with schizoid personality disorder present with a flat affect and are indifferent to praise.



PLAY PICMONIC

Personality Functioning

Self Functioning

Few Pleasurable Activities

[Short-list of Pleasurable Activities](#)

People with schizoid personality disorder find pleasure in few activities. They prefer solitude and have little to no desire in working with others. They tend to invest their energy and time in intellectual work.

Interpersonal Functioning

Lacks Interest in Social Relationships

[Ignores Social-book Relationship-status](#)

Individuals with schizoid personality disorder are unable to establish and maintain close personal relationships. They are uncomfortable with human interaction and have little need or desire for emotional ties with others.

Pathological Personality Traits

Lack Close Friends

[Ignores Friendship-necklace](#)

Since they have difficulty responding to others in a meaningful and emotional way, people with schizoid personality disorder may appear anxious or uneasy in the presence of others. They lack close friends and prefer to engage in solitary activities.

Indifferent to Praise

[Indifferent to Compliments](#)

Since they have difficulty showing emotions, individuals with schizoid personality disorder are indifferent to praise. Their behavior and emotions lack spontaneity and tend to appear serious.

Chooses Solitary Activities

[Chooses to play Solitaire](#)

People with schizoid personality disorder experience a lifelong pattern of social withdrawal and prefer solitary activities. They prefer to work alone.

Little Interest in Sex

[Ignoring Sex-symbols](#)

A lack of desire in establishing social relationships prevents them from maintaining intimate relationships. Individuals with schizoid personality disorder have little interest in sex and prefer to invest their energy in intellectual pursuits.

Emotional Coldness or Detachment

[Emoticons Frozen and Detachment](#)

People with schizoid personality disorder present with a flat affect. They may appear emotionally cold or detached from their environment. They take everything seriously and have difficulty taking things lightly.