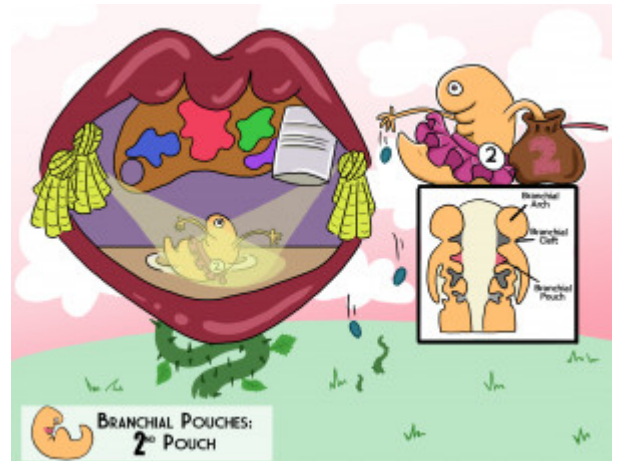


Branchial Pouches: 2nd Pouch

The branchial pouches are found on the endodermal side of the branchial (pharyngeal) apparatus. The 2nd branchial pouch is responsible for forming the epithelial lining of the palatine tonsils.



PLAY PICMONIC

Palatine Tonsils

Pallet-tin and Tassels

The 2nd branchial pouch develops into the epithelial lining of the palatine tonsils.