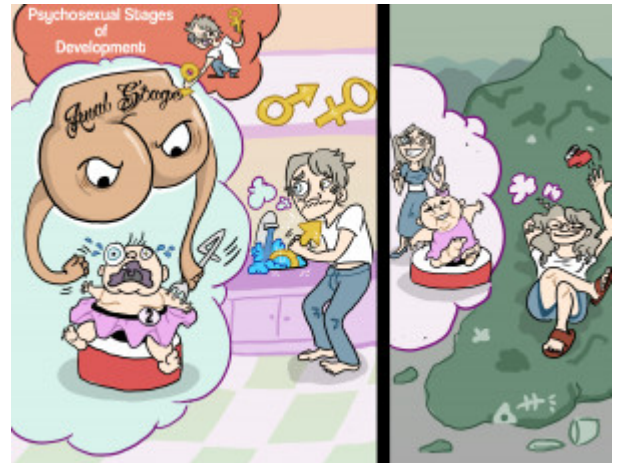


## Psychosexual Stages of Development - Anal Stage

The anal stage is the 2nd stage of psychosexual development and associates erogenous pleasure with defecation, and ranges from the ages of 2-4 years old. Freud believed that difficult toilet training could have long-lasting effects on personality, and could lead to anal expulsive fixation and anal retentive fixation.



PLAY PICMONIC

### 2 to 4 Years

(2) tutu to (4) fork

The anal stage of psychosexual development ranges from the age of 2 to 4 years old.

#### Anal-retentive Fixation

Sicko with OCD

The anal retentive fixation is characterized by an adult who is meticulous, orderly, rigid and frugal. This is related to a child who tried to avoid harsh treatment by holding on to feces, so as not to make a mess, the adult holds on to messy feelings. These adults are clean, orderly, and keep a tight hold on their money and schedule.

#### Anal-expulsive Fixation

Sicko with Mess

Anal expulsive fixation describes an adult who is rebellious toward authority. They are irresponsible, disorderly and wasteful. These traits are a reaction to overly passive toilet training. The child that creates a big mess at the most inconvenient time is like an adult who acts irresponsibly.