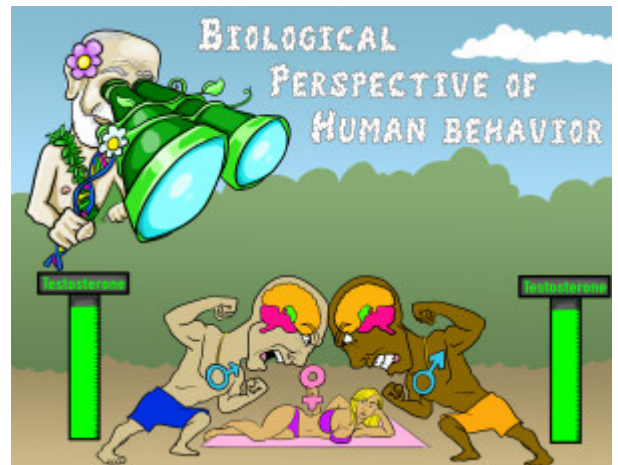


Biological Perspective of Human Behavior

This perspective on human behavior assumes that function and human behavior has its origins in biological processes in the body. It rationalizes that physiology, genetics, brain structure, and hormones effect behavior.



PLAY PICMONIC

Biology Determines Behavior

Gender and Hormone levels affecting Behavior

Simply stated, this perspective shows that biological influence determines behavior. Human physiology, hormone levels, gender, and genetic makeup are contributors to behavior in this perspective.