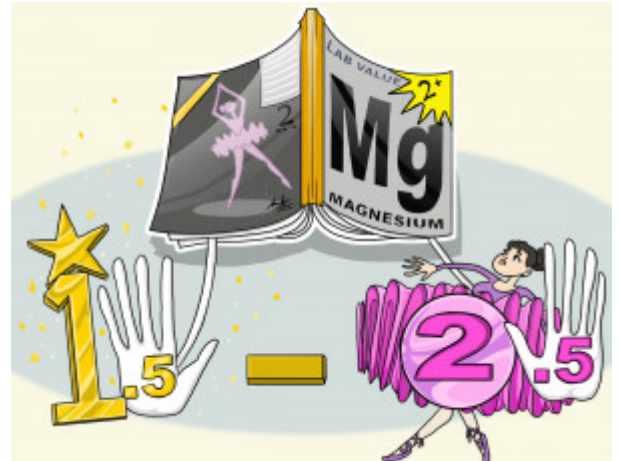


## Magnesium (Mg<sup>2+</sup>) Lab Value

Magnesium is important in cellular function, and affects cardiovascular function, dreaming, muscle contraction, and insulin regulation. Normal magnesium serum levels range between 1.5 to 2.5 mEq/L. Patients who are hypomagnesemic show muscle weakness, increased reflexes, tetany, and can develop convulsions. On the other hand, those with hypermagnesemia show bradycardia and flushing at mildly increased levels. As the hypermagnesemia increases, patients can show flaccid paralysis and EKG changes. At levels above 15, respiratory arrest and asystole occurs.



PLAY PICMONIC

### 1.5 to 2.5 mEq/L

(1) Wand (.5) Hand to (2) Tutu (.5) Hand

Normal magnesium serum levels range between 1.5 to 2.5 mEq/L. Patients who have hypomagnesemia show muscle weakness, increased reflexes, tetany, and can develop convulsions. On the other hand, those with hypermagnesemia show bradycardia and flushing at mildly increased levels. As the hypermagnesemia increases, patients can show flaccid paralysis and EKG changes. At levels above 15, respiratory arrest and asystole occurs.