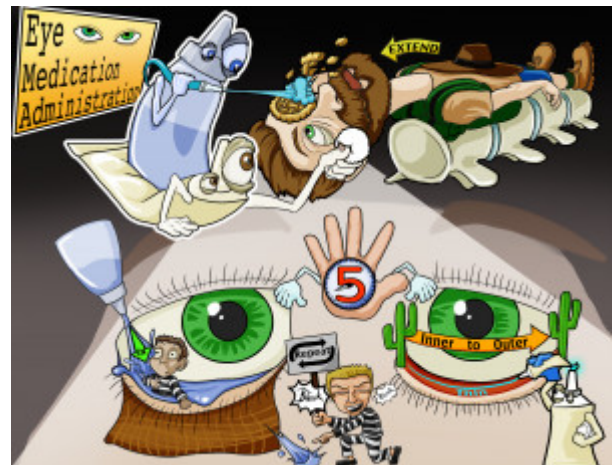


Eye Medication Administration

Administering eye medication is a fundamental skill that requires the nurse to carefully instill drops into the conjunctival sac or administer ointment along the inner edge of the lower eyelid. Prescribed ophthalmic medications are often used in the treatment of eye conditions such as glaucoma or post cataract surgery.



PLAY PICMONIC

Procedure

Supine with Neck Hyperextended

[Supine on Spine with Hiker-extended Neck](#)

The patient should be placed in a supine or sitting position with the neck slightly hyperextended. However, never hyperextend the neck of a patient with a cervical spine injury.

Wash Away Crusts

[Washing Away Pie-crusts](#)

If crusts or drainage are present along the eyelid or inner canthus, gently wash. Any dried or difficult to remove crusts should be soaked by applying a damp washcloth or cotton ball over the eye for a few minutes. Always wipe clean from inner to outer canthus.

Cotton Ball on Cheekbone

[Cotton Ball on Cheek](#)

Hold a cotton ball or clean tissue in non-dominant hand on the patient's cheekbone just below lower eyelid and gently press downward with thumb or forefinger against the bony orbit. Ask the patient to look up at the ceiling.

For Ophthalmic Drops

Instill Drops into Conjunctival Sac

[Instilling Drops into the Con Sack](#)

Drops should be administered above the conjunctival sac. Avoid instilling directly onto the cornea as this area is very sensitive to pain. After the medication has been instilled, ask the patient to close their eyes. With medications that cause systemic effects, gently apply pressure for 30-60 seconds on the patient's nasolacrimal duct.

Repeat if Missed or Patient Blinks

[Repeating After Missing and Blinking](#)

If the patient blinks or closes their eye and the drop is missed, repeat instillation to ensure administration of medication.

5 Minutes Before 2nd Medication

[\(5\) Hand Clock Between 2 Medications](#)

If the patient is to receive more than one eye medication in the same eye, wait at least 5 minutes before instilling the next drop in order to avoid interaction between medications.

For Ophthalmic Ointment

Thin Stream Along Inner Edge

[Thin Line Along the Inner Edge of Eyelid](#)

Apply a thin stream of ointment into the lower conjunctival fornix, from inner canthus to outer canthus. Then ask the patient to close the eye.

Inner Canthus to Outer Canthus

Inner Cactus to Outer Cactus

Always clean the area or apply medication from the inner canthus to the outer canthus. This process aids to avoid entrance of microorganisms into the lacrimal duct. Additionally, avoid touching eyelids with anything to prevent infection and never allow another patient to use someone else's medication.