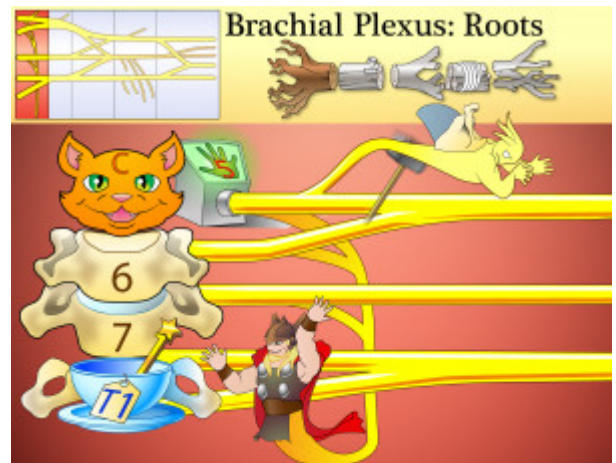


## Brachial Plexus Roots

Spinal nerves C5 through T1 form the roots of the brachial plexus.



PLAY PICMONIC

### C5 through T1

Cat (5) Hand vertebrae through Tea (1) Wand vertebrae

C5, C6, C7, C8 and T1 are the spinal nerves that form the roots of the brachial plexus. More specifically, it is the ventral/anterior primary rami of C5-T1 that form the roots.

### Long Thoracic Nerve

Long Thor Nerve

This nerve originates from the brachial plexus roots (C5-C7) and innervates the serratus anterior muscle. Damage to this nerve may lead to the classic winged scapula, where the scapula has a wing-like resemblance due to the medial border of the scapula sticking out against the posterior thoracic wall.

### Dorsal Scapular Nerve

Dorsal-fin Scapula Nerve

This nerve originates from the brachial plexus roots (C5) and innervates the levator scapulae, rhomboid major and rhomboid minor.